



NEW SOUTH
WALES

SECONDARY ACTIVITY

MARINE ECOSYSTEMS

FOOD WEB

- Syllabus Reference
- Resources
- Worksheet



SYLLABUS REFERENCE

- **E-LW5** Science and technology contribute to finding solutions to conserving and managing sustainable ecosystems.

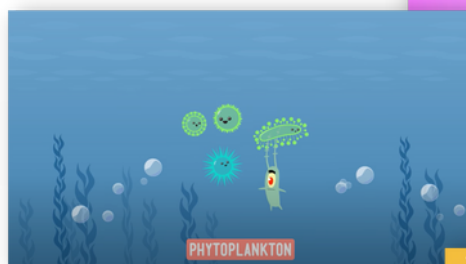
Students:

- a. construct and interpret food chains and food webs, including examples from Australian ecosystems

ADDITIONAL RESOURCES



- [Food Chains Compilation: Crash Course Kids](#)
- [Food Webs: Crash Course Kids #21.2](#)
- [Intertidal Rocky Shore Life: An Identification guide](#)



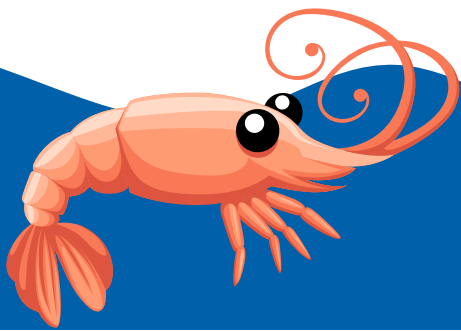
HOW TO CREATE YOUR FOOD WEB

STUDENT WORKSHEET

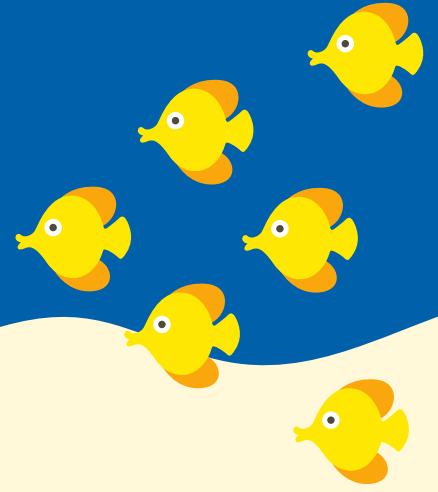
- Cut out plant and animal cards provided.
- Arrange plant cards (producers) at the bottom of a large piece of paper.
- Find animals (first order consumers) that eat plants and spread above plants, leaving room to draw arrows.
- Place animals (second order consumers) that eat first order consumers, above first order consumers.
- Place remaining animals (third order consumers) above second order consumers, at top of paper.
- Glue cards onto paper.
- Draw arrows to show what each animal eats - they may eat several things. Remember, arrows must point from the species being eaten to the one that's eating it.

MARINE ECOSYSTEM FOOD WEB

ORGANISM	DIET
Snake-Skinned Chiton	Seaweeds
Common ecklonia kelp	Producer
Waratah anemone	Small crustaceans and small fish
White Sponge	Detritus, plankton and debris
Short coralline algae	Producer
Fireworm	Corals, anemones and small crustaceans
Red striped shrimp	Algae
Common hairy crab	Seaweeds and algae
Gloomy Octopus	Crustaceans and small fish
Eleven-armed sea star	Marine Worms and small crabs
Silver Gull	Crustaceans, small fish, anemones fish and squid
Rock Goby	Small prawns crabs and worms



ORGANISMS



Snake Skinned Chiton



Short Coralline Algae



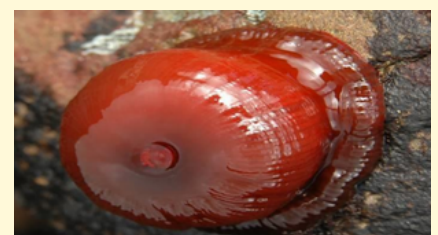
Common Ecklonia kelp



Fireworm



White sponge



Waratah anemone



Red-striped shrimp



Common hairy crab



Gloomy octopus



Eleven-armed sea star



Silver Gull



Rock Goby

**ANSWER THESE
QUESTIONS ABOUT
THE FOOD WEB YOU
HAVE CREATED**

**Which organisms are
first order consumers
(eat producers)?**

**Which
organisms are
producers?**

**Which organisms
are **second order**
consumers (eat
first order
consumers)?**

**What would happen to
the population of other
species if anemones
were removed from
the food web?**

**Are any animals
both **second order**
and **third order**
consumers?**

**Why are
sponges
important for
the food web?**





NEW SOUTH
WALES

CHECK OUT MORE
TEACHER
RESOURCES
ON OUR HUB!



beachsafetyhub.org.au